



We believe in making travel by bus a better way to get about. That's why on many of our buses we have free WiFi and USB charging points.

On some buses you'll also find seats grouped round tables, ideal for family groups or friends travelling together.



gonortheast.co.uk

0191 420 5050

9am-5pm Mon-Fri

email
hello@gonortheast.co.uk

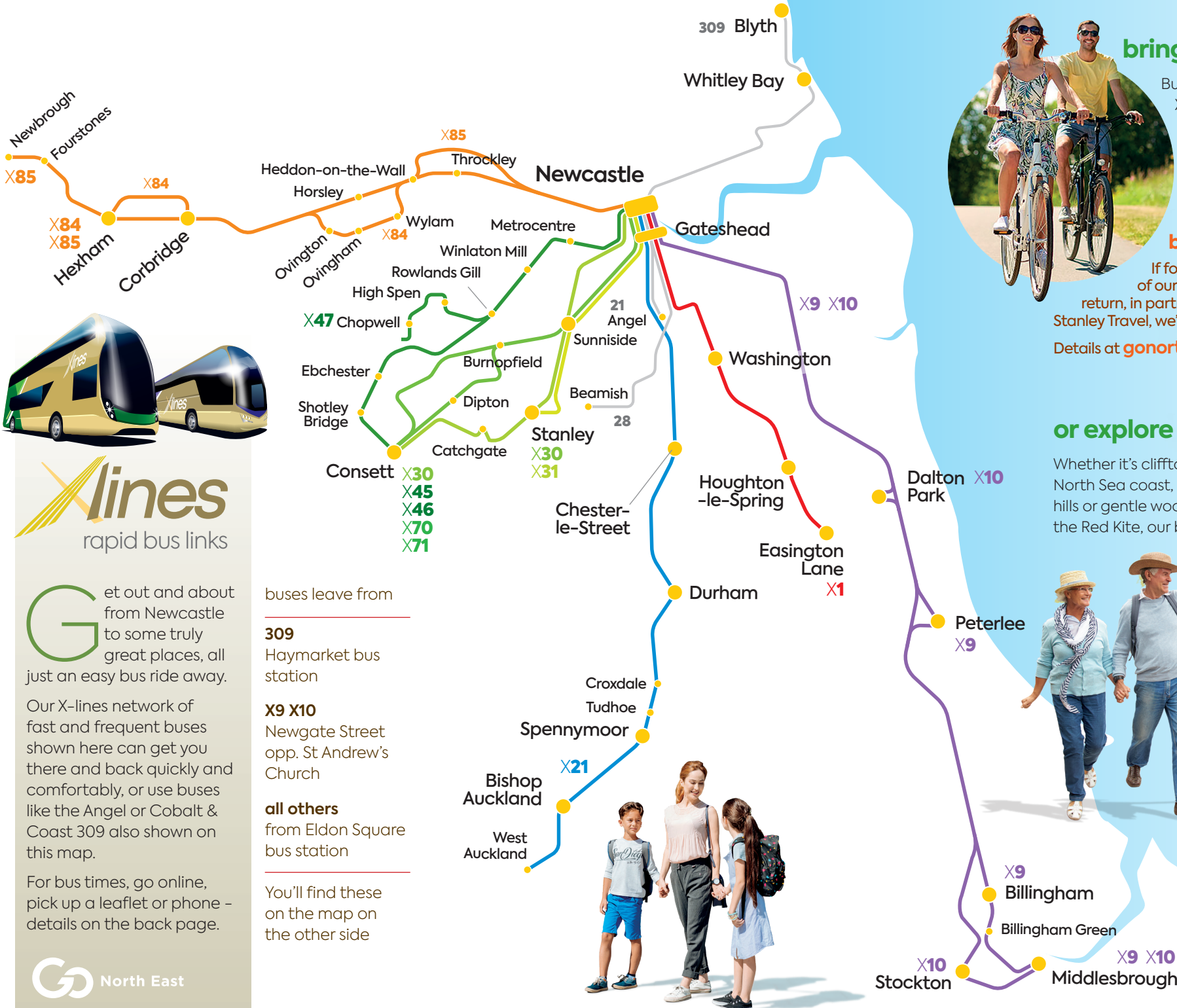


Xlines
rapid bus links

Get out and about from Newcastle to some truly great places, all just an easy bus ride away.

Our X-lines network of fast and frequent buses shown here can get you there and back quickly and comfortably, or use buses like the Angel or Cobalt & Coast 309 also shown on this map.

For bus times, go online, pick up a leaflet or phone - details on the back page.



bring your bike

Buses on X-lines X9, X10, X70, X71, X84 and X85 have room for 2 cycles on each. They're easy to secure in place, so get out there and explore some glorious scenery on 2 wheels.

bike bus guarantee

If for any reason the bus isn't one of our cycle friendly types on your return, in partnership with our friends at Stanley Travel, we'll still get you home.

Details at gonortheast.co.uk

or explore on foot

Whether it's clifftop walks along the breezy North Sea coast, striding out into the Pennine hills or gentle woodland strolls in the land of the Red Kite, our buses can take you away for a true breath of fresh air on some spectacular walks.

And often, you won't have to retrace your steps; just catch another bus further along.

Whitley Bay & Blyth

Take a ride up the North Sea coast and blast your lungs full of tangy fresh sea air. Clifftop walks, miles of sandy beaches, fish'n'chips, an ice cream... close to heaven, some would say.

	M-F	Sa	Su
DAYTIME FREQUENCY	20	20	30
TRAVEL TIME	Whitley Bay Blyth	42 mins	64 mins

country walks & Hadrian's Wall Tynedale & Hexham

Head off into the open folds of the northern Pennines, where sheep roam wild and the air is like fine wine.

Take an invigorating walk or change in Hexham to the AD122 bus to explore Hadrian's Wall. Or wander round the lovely market town of Hexham with its splendid abbey church, then indulge in a scrumptious cream tea.

	M-F	Sa	Su
DAYTIME FREQUENCY	30	30	--
TRAVEL TIME	48-65 mins		

Durham

Winding cobbled streets take you up to Durham Cathedral and Castle above a tight coil of the River Wear far below, and one of the most stunning city panoramas in Europe. Soak up the timeless atmosphere of this quintessential old English university city.

	M-F	Sa	Su
DAYTIME FREQUENCY	15	15	60
TRAVEL TIME	54 mins		

Angel of the North

Antony Gormley's Angel of the North first spread its wings in February 1998. It's taller than four double decker buses and has a wingspan as big as a jumbo jet - awe-inspiring and quite beautiful.

	M-F	Sa	Su
DAYTIME FREQUENCY	7	7	10
TRAVEL TIME	25 mins		

Beamish the living museum of the north

Discover what life was once like in the North East in this living, working museum. Costumed folk bring to life the Town, Pit Village, Home Farm and Pockerley Old Hall. The buildings have been brought brick by brick from around the region and rebuilt here.

	M-F	Sa	Su
DAYTIME FREQUENCY	30	30	60
TRAVEL TIME	49 mins		



great value
unlimited travel on
all our buses all day

adult	£7
age 5-25	£4.50
family	£12

2 adults with up to 3 children

buy online
on our app or
from the driver

not valid on Toon Tour

higher fares apply
if you want to travel
on X9/X10
or transfer to AD122



using
more public
transport
across
Tyne & Wear?

This ticket gives you unlimited daily travel across Tyne and Wear on most buses, Metro, Shields Ferry and the Sunderland to Blaydon rail line.

Not valid on Toon Tour.

networkonetickets.co.uk

network
one
travel tickets

adult	£7.80
under 16	£3.90
family	£15.50

a family is
2 adults &
up to 3 children



NEWCASTLE GATESHEAD

toon tour

Summer 2021

plus other
great places
to go by bus



green, great value & good fun

We're rather proud of our fine city here at latitude 55° north, and like nothing more than showing it off. Experience it from the top of an open-top double-decker bus.

Hop off at any of the stops shown on the map to see the sights and hop on another bus later on.

There are also plenty of great places to go further afield, all just an easy bus ride out of the city.

Look on the other side of this leaflet for some suggestions.

Our buses are modern, smart and comfortable. Many have creature comforts like free on-board WiFi and USB power, so you can stay charged up and in touch on the move.

They're also very green, with low-emission engines and, of course, going by bus avoids parking problems and reduces congestion.

	1 day	3 days
adult	£10	£25
concession student	£8	£20
child	£5	£12
4 together	£25	£50

any 4 people any age

concessionary passes can't be used on the Toon Tour, but show your pass to travel at the concessionary rate

FREE WiFi
share your snaps with us on Twitter
#toontour

17 Apr - 30 May
31 May - 1 Oct
2 Oct - 31 Oct

weekends & public holidays
daily
weekends only

1 Newcastle Central Stn	1005	1035	05 35	1605	
2 St James' Park	1011	1041	11 41	1611	
3 Great North Museum	1015	1045	15 45	1615	
4 John Dobson Street	1020	1050	20 50	1620	
5 Biscuit Factory	1027	1057	27 57	1627	
6 Quayside Law Courts	1031	1101	31 01	1631	
7 Sage Gateshead	1036	1106	36 06	1636	
8 Baltic Square	1040	1110	40 10	1640	
9 Tyne Bridge	1052	1122	52 22	1652	
10 Market Street	1055	1125	55 25	1655	
11 Newcastle Castle	1057	1127	57 27	1657	
12 Newcastle Central Stn	1100	1130	00 30	1700	



Also use Quaycity to get around the city centre and Quayside.
every 15 mins Mon-Sat daytimes
every 30 mins evenings & Sundays

the bus can't use stop 2 while football matches are taking place at St James' Park

1 Life Science Centre
Explore the Science Theatre, a 4D Motion Ride, the North's biggest planetarium and plenty more hands-on stuff in this award-winning attraction.
life.org.uk

1 Discovery Museum
Bursting with interactive displays, discover all about life in Newcastle and Tyneside, from the area's maritime history, world-changing science and technology, right through to fashion.
discoverymuseum.org.uk

2 St James' Park
A visit to this stadium is a must, even if you're not a Toon fan. It has the largest cantilever roof in Europe and a stadium tour will bring the glory of the place to life - mostly three times a day.
nufc.co.uk

3 Great North Museum: Hancock
You'll find loads of exciting and interesting things to discover here, with plenty to keep inquisitive children in awe. Check out the Living Planet display and the virtual aquarium!
greatnorthmuseum.org.uk



the bus can't use stops 7 and 8 on Sundays when the Quayside market takes place

4 Laing Art Gallery
If world-class paintings and sculpture do it for you, you'll love this fine collection housed in a fine building. It includes outstanding locally produced Newcastle silver, glass and ceramics.
laingartgallery.org.uk

6 Biscuit Factory
Take a look at the UK's largest independent commercial art, craft and design gallery in the heart of Newcastle's cultural quarter in a former Victorian warehouse. It showcases and sells work of over 200 artists, making art truly accessible.
thebiscuitfactory.com

6 Ouseburn Farm
Spend time with the pigs, sheep, goats, chickens, rabbits, guinea pigs, lizards, tortoises etc in this award-winning charity farm just a short walk away. There's no end of cool stuff for both kids and grown ups!
ouseburnfarm.org.uk



7 Quayside
Plenty to do here. The Market is fun on a Sunday afternoon, or take a boat cruise down the Tyne to the coast and back. Discover great cafés, pubs and restaurants, or just soak up the atmosphere.

9 Sage Gateshead
This music venue is deeply rooted in the North with an international profile. The building itself is spectacular and entry is free, so pop in for great views of the Quayside.
sagegateshead.com

11 Baltic Square & The Baltic
The Baltic Centre for Contemporary Art is in a completely renovated flour mill, the biggest gallery of its kind in the world. There are changing exhibitions and activities giving a compelling insight into contemporary artistic expressions.
baltic.art



11 River Escapes
Sail from The Pontoon at the Millennium Bridge on one of three cruises to see the city, countryside or sea with commentary as you travel.
riverescapes.co.uk

15 Grey's Monument
Named after Earl Grey and built in 1838 to commemorate the Reform Act of 1832, which was drafted during Grey's time as Prime Minister, this fine monument often has markets and entertainment around the base.

15 Grainger Town
The historic heart of Newcastle upon Tyne includes the Theatre Royal and the elegant Georgian sweep of Grey Street. Discover independent shops, galleries and great restaurants, bars and cafés. Wander through the undercover Grainger Market, home to the original Marks & Spencer's Penny Bazaar, and grab a bargain or two for yourself.

17 Newcastle Castle
This imposing Norman fortress is a rugged reminder of the area's turbulent history and of royal authority. It's also where criminals were imprisoned and executed. Discover the story of Newcastle, how the city got its name and enjoy fabulous views of over the and the Tyne.
newcastlecastle.co.uk



Yorkshire beckons

Fancy a fabulous day out down on the North Yorkshire coast?

Our quick X11 bus leaves Newcastle every day during the summer at 8.40am, and gives you about 7 hours in Whitby or 6 in Scarborough.

If you choose Scarborough, we'll throw in a free ride on the Beachcomber open-top bus that runs all along the sea front and takes you to Alpmare water park and Sea Life.



Or you can spend a bit of time in each. You get back to Newcastle at 8.50pm.

£15 adult
£7 child
£40 any 4 together

includes travel on any connecting Go North East buses

